

Refurbishment

Bespoke Refurbishments



Green
Update

Refurbishment with a vision

Start successfully with new rules



Minimise the risk – initiate alterations punctually

The end of fluorescent lamps is in sight. And the sharp increase in energy prices is also noticeable. Strategies are needed to ensure that efficient lighting remains economical.

Timetable phase-out

	25.2.23 RoHS	25.8.23 RoHS	
Compact fluorescent lamps (without integrated ballasts)			
Circular T5 fluorescent lamps			
Linear T5 fluorescent lamps			
Linear T8 fluorescent lamps (600 mm, 1200 mm, 1500 mm)			

© licht.de

**RETROFIT
IS NOT
THE
SOLUTION!**

- Light quantity, light distribution, glare, light colour, colour rendering and consistency usually differ.
- An alteration in the illumination level, homogeneity and luminance distribution of the previous system.
- The LED light and efficiency characteristics of the retrofit lamp are obviated by the old reflector technology.
- The test certification on the luminaires become invalid when the luminaires are not tested anew.
- Problems when dimming the light and with emergency lighting.
- Refurbishment with retrofit lamps is not subsidised.

Benefits from new lighting

– start the update now and win more time!

Quick and simple

Compatible and efficient products can be exchanged 1:1 – the rapid way to achieve perfect lighting.

Proven quality

No compromises on quality and light – for fast profitability and long service intervals.



Sustainable savings

Exploit potential savings and also still comply with EU specifications for CO₂ and RoHS – save for tomorrow's world

Convenient and efficient

A control system which is tailored to needs for efficient, bespoke light. Save money with modern comfort included.

A successful strategy for new lighting

Dynamic new aspects become important when lamps are phased out. Time to get started on some new projects and update older ones. We can always provide product lines and concepts for every strategy. We are happy to support you in the implementation of your requirements and needs. Funding scenarios and light management can also be taken into account.



netlife light management – exploit additional potential for savings

- + netlife easy:** Simple, wired stand-alone light control
- ++ netlife flex:** Bluetooth control solution, ideal for 3-core leads
- +++ netlife pro:** Centralised light management, IoT solution/Cloud solution



Refurbishment planning

Changing room with *hokal*

UGR 13 140 lm/W L80 B10 50.000

**T8
LED**

Changing room:
50 m²
200 lux
2750 h/a

Old system: PLP

New system: **hokal**

Energy savings
per room

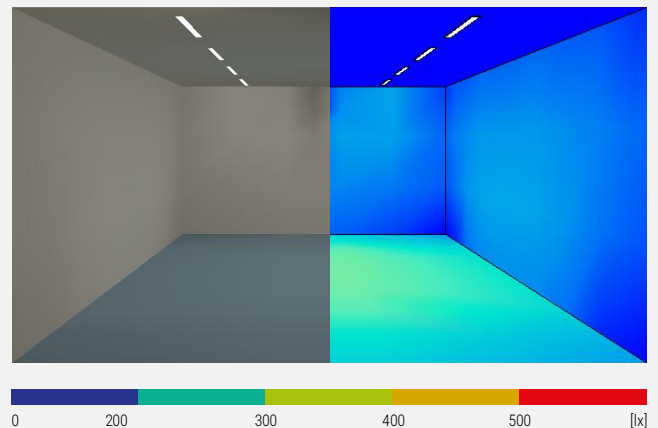
58%

Reduction of CO₂ emissions



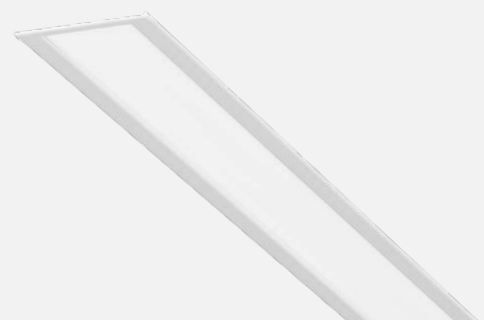
0,39 t/year
per room

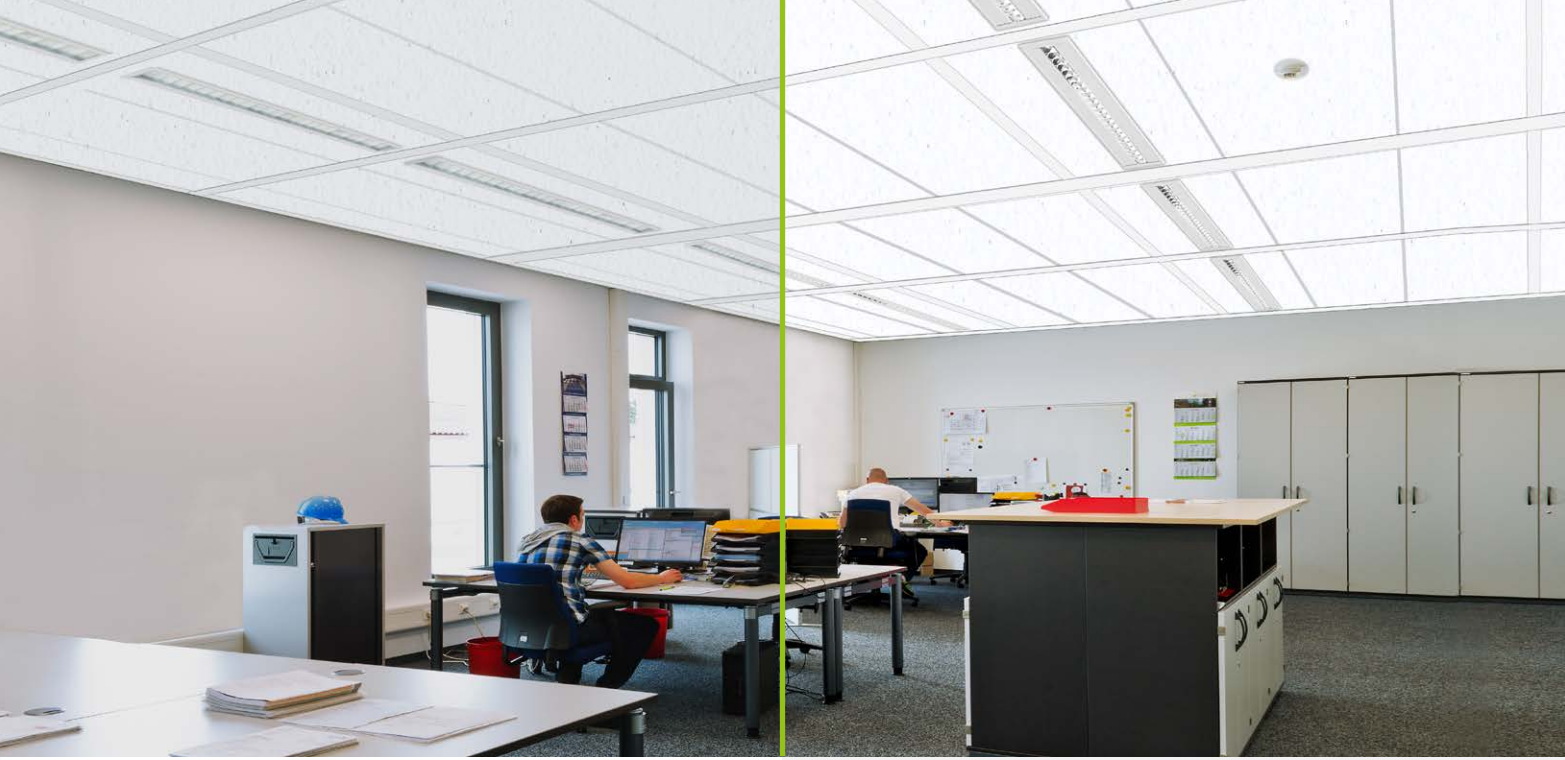
Eligible for funding ✓



hokal

- Available as surface-mounted, recessed, continuous-row channel and pendant luminaire
- Installation solution for panel ceilings
- Optionally with micro-louvre or diffuser technology
- Sheet steel housing with attached sheet steel end caps
- Continuous row mounting with optically continuous louvre
- Suitable for VDU workstations according to DIN-EN 12464-1





Refurbishment planning

Office with RSEX

UGR19 147 lm/W L80 B10 50.000

**T8
LED**

Office:
27 m²
500 lux
2750 h/a

Old system: RSED

New system: RSEX

Energy savings
per room

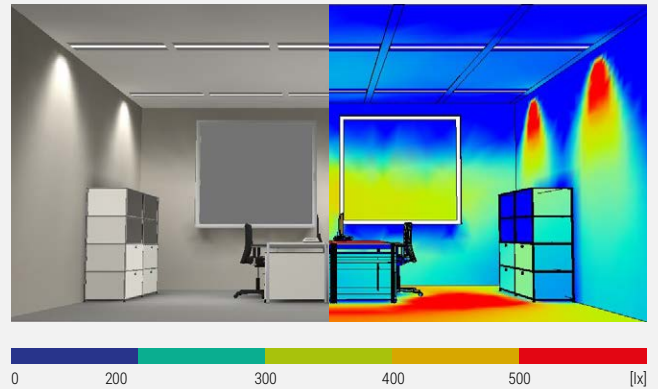
55%

Reduction of CO₂ emissions



0,33 t/year
per room

Eligible for funding



RSEX

- Louvre linear luminaires for different ceiling systems
- Suitable for VDU workstations
- Luminaire suitable as a replacement for many Regiolux existing luminaires such as cubus, lura and RM/RS.
- Can be designed for use in panel ceiling systems if required, e.g. listed areas.



Refurbishing with know-how

Planning, testing and coordinating is always that little bit easier with an experienced project partner by your side. Upgrade your facility to perfection with Regiolux. The fast way to a new light solution: our services for your lighting update.



Advice – it's what makes us better

There's no autopilot available for refurbishments and optimisations. Depending on the system layout, an individual approach is important for successful implementation. How do we manage to do this? One indispensable element is problem-solving expertise to ensure that no budget is wasted.

This leads to customised solutions. Irrespective of whether this concerns conversions, revisions, modernisations, special solutions or an exchange set, whichever path you choose, we can always solve any kind of concept. Let's start together.

Brochures about our refurbishment topics:



Image index

- 1 Composing: Vetreno, hvostik, ProStockStudio, shutterstock.com
- 2 Tomasz Trybus, pond5.com
- 6 Tino Metten, Lichtwerk GmbH, Königsberg DE
- 7 Frank Freihofer, Kitzingen DE



www.regiolux.de/en/bespoke-refurbishments

REGIOLUX

Regiolux GmbH
Hellinger Straße 3
D 97486 Königsberg
T +49 9525 89 0
info@regiolux.de
www.regiolux.de

Regiolux @ Social Media

